

# Arizona Origin Science Association

## Scripture Series

## Confusion Delineated

## Genesis 10:6-15



Genesis 10:6 The sons of Ham *were*  
Cush, Mizraim, Put, and Canaan.  
They gave rise to which nations?





Cush, the same as “Kish,” is usually translated in the Old Testament as “Ethiopia,” a land identified in the Tell El Armana tablets as “Kashi.”



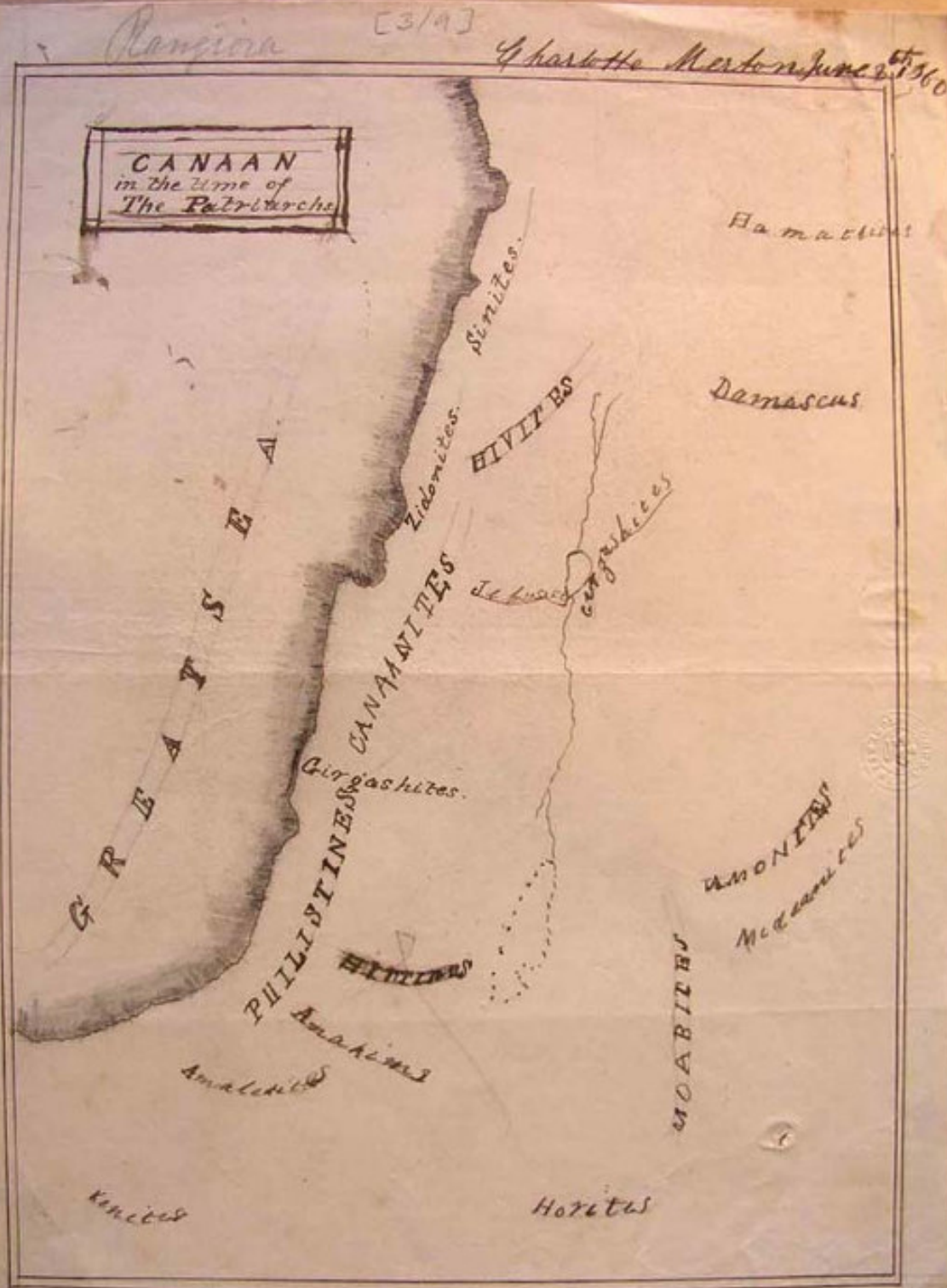


Mizraim is the usual name for Egypt in the Bible, which is also called “the land of Ham” in Psalm 105:23.





According to the Jewish historian Josephus, Phut in the Bible is the same as Libya.



Canaan, Ham's youngest son, is obviously the progenitor of the Canaanites.





Who gave rise to the nations of Arabia?



Genesis 10:7a The sons of Cush were Seba, Havilah, Sabtah, Raamah, and Sabtecha: all apparently settled in Arabia due to the names left behind.

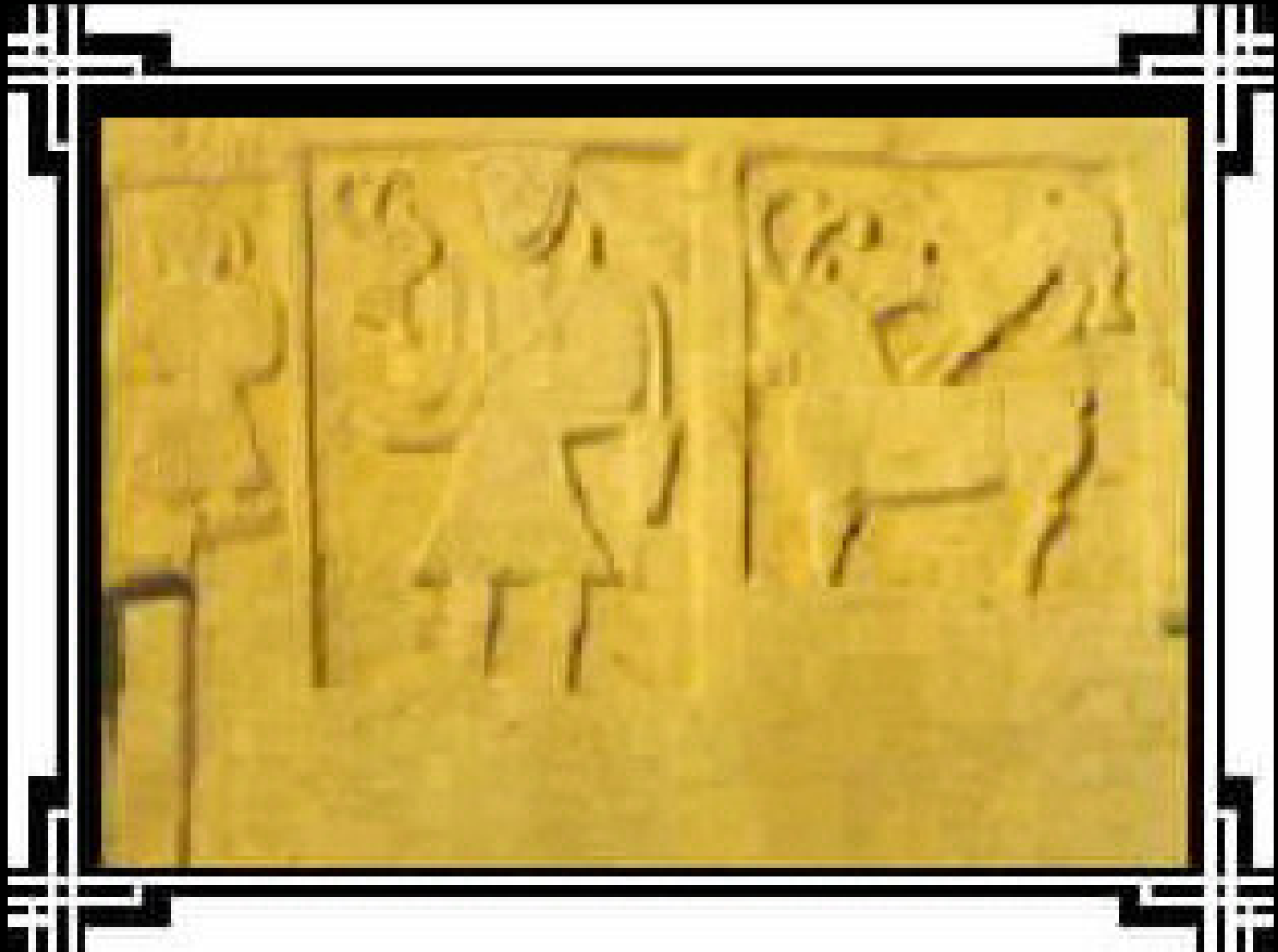






Which of these  
sons of Cush  
gave rise to  
the nation of  
Sudan?

Seba later migrated into the Sudan, giving his name to the Sabeans (Isaiah 45:14).

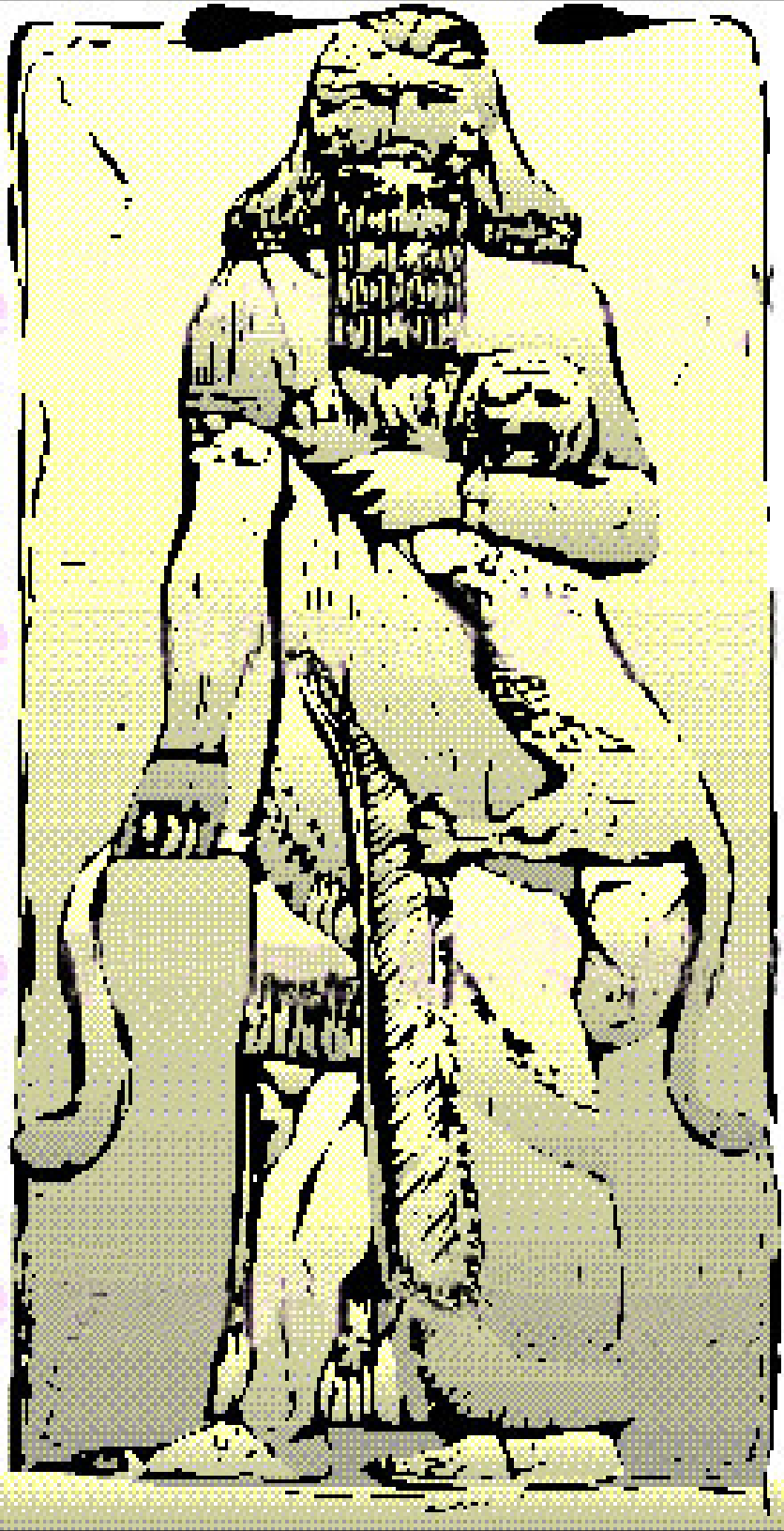




## The Middle East



Sheba and Dedan were evidently well known Arabians in the days of Abraham, since two of his grandsons through Keturah were named after them (Genesis 25:3).



Which additional son of Cush became the great leader of his time and what does his name mean?





Nimrod

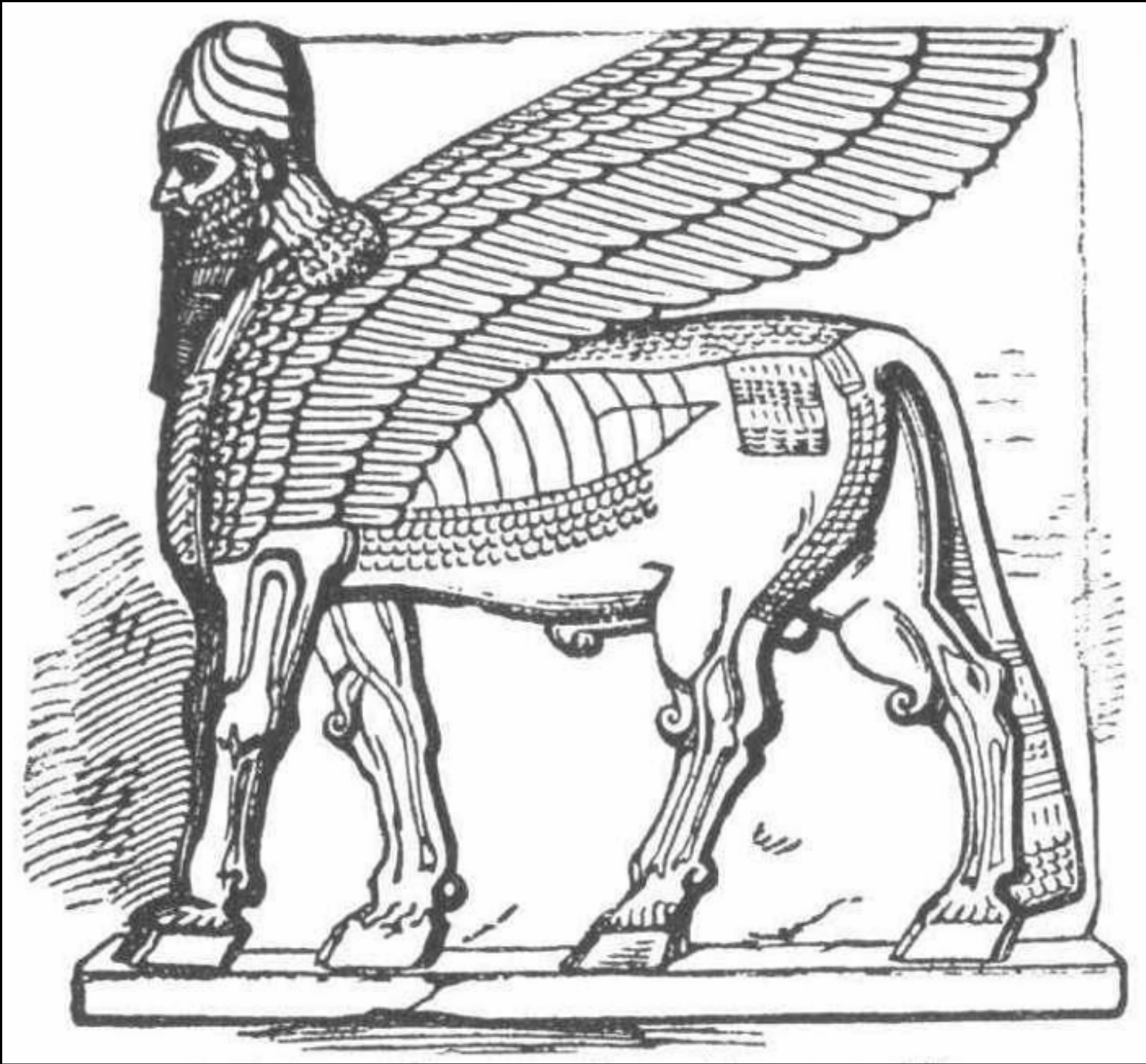


AVRAHAM

Tales from the Midrash

Genesis 10:8  
Cush begot  
Nimrod; he  
began to be a  
mighty one on  
the earth.  
Nimrod means  
“let us rebel!”

# How did Nimrod gain acclaim?







Genesis 10:9 He  
was a mighty hunter  
before the Lord;  
therefore it is said,  
“Like Nimrod the  
mighty hunter  
before the Lord.”



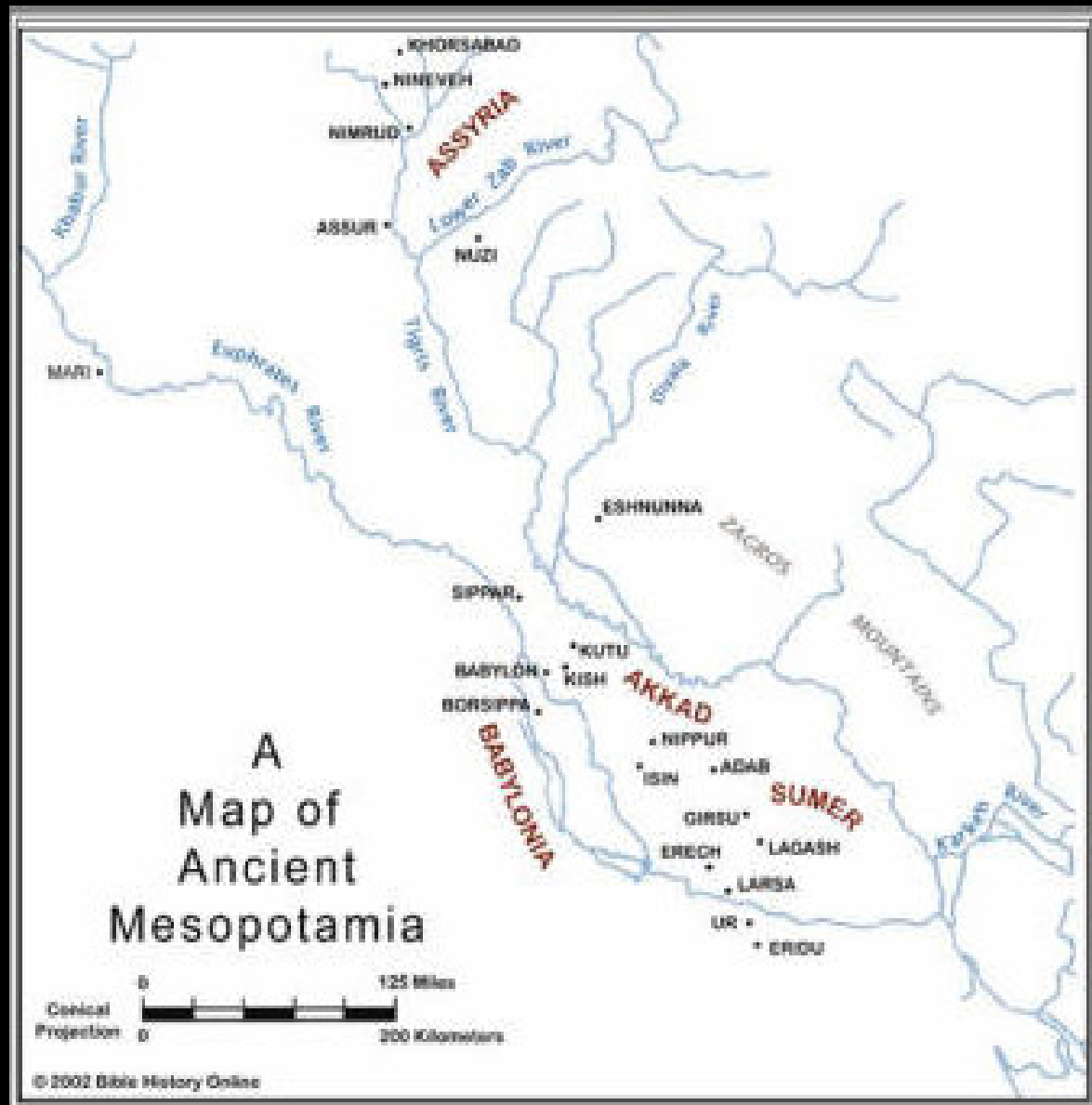
*Circa 2000 B.C.*

Where did  
Nimrod establish  
his kingdom?

*Nimrod deified:  
Ancient Nineveh Artifact*



Genesis 10:10 And the beginning of his kingdom was Babel, Erech, Accad, and Calneh, in the land of Shinar.





Who laid  
down the  
beginning of  
what would  
later become  
the Assyrian  
empire and  
now modern  
Syria?

# Asshur. Genesis 10:11 From that land he went to Assyria and built Ninevah, Rehoboth Ir, Calah,





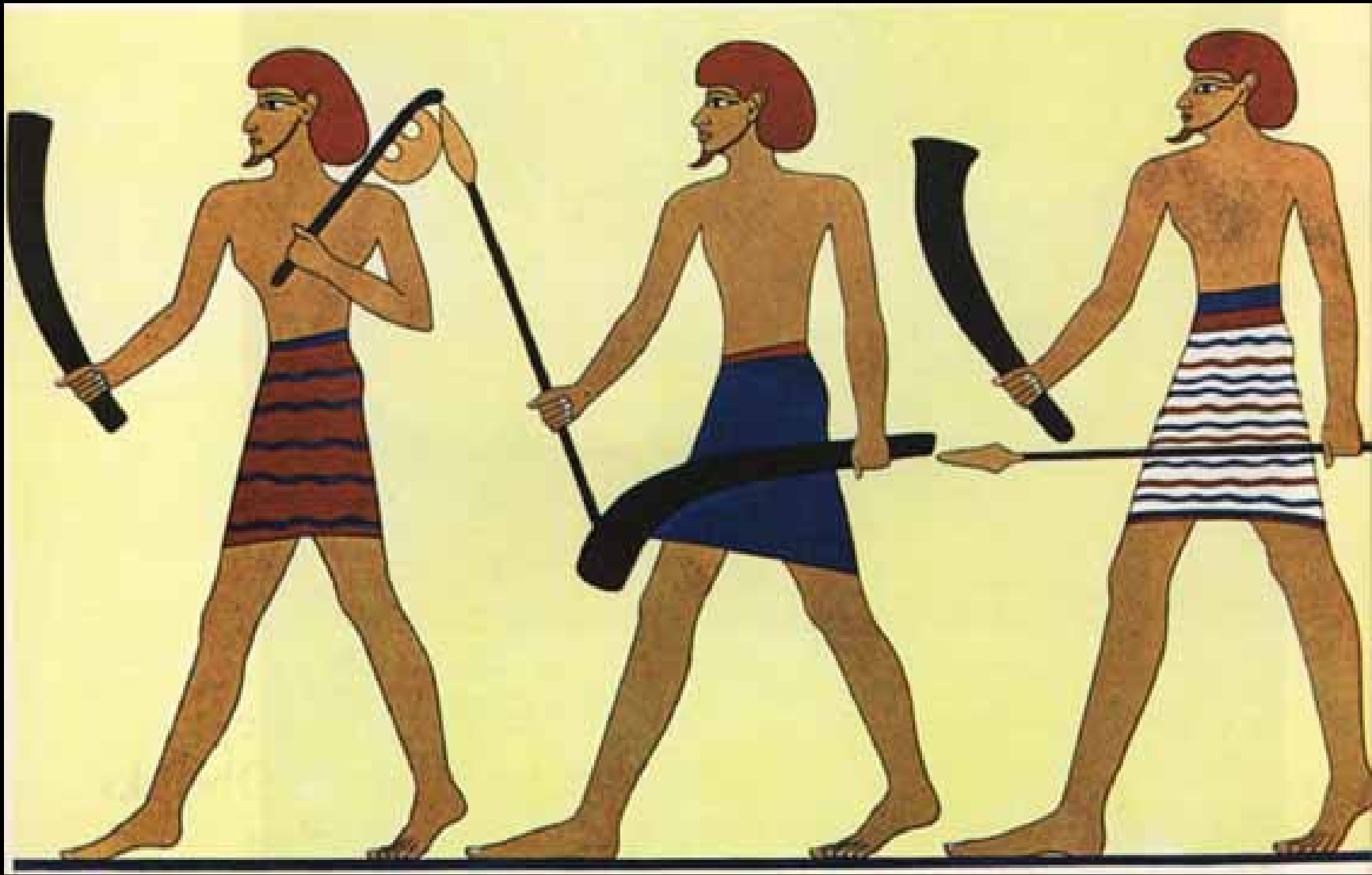
Genesis 10:12 and Resen between  
Nineveh and Calah (that *is* the  
principal city). **What does this mean?**





Calah, still called “Nimrud”, has been excavated about 20 miles south of Nineveh. These three satellite cities along with Nineveh comprise a metropolitan complex.

Genesis 10:13 Mizraim begot ...  
14 ... Pathrusim, and Casluhim, (from  
whom came Philistines,) and Caphtorim.  
**They gave rise to which nations?**

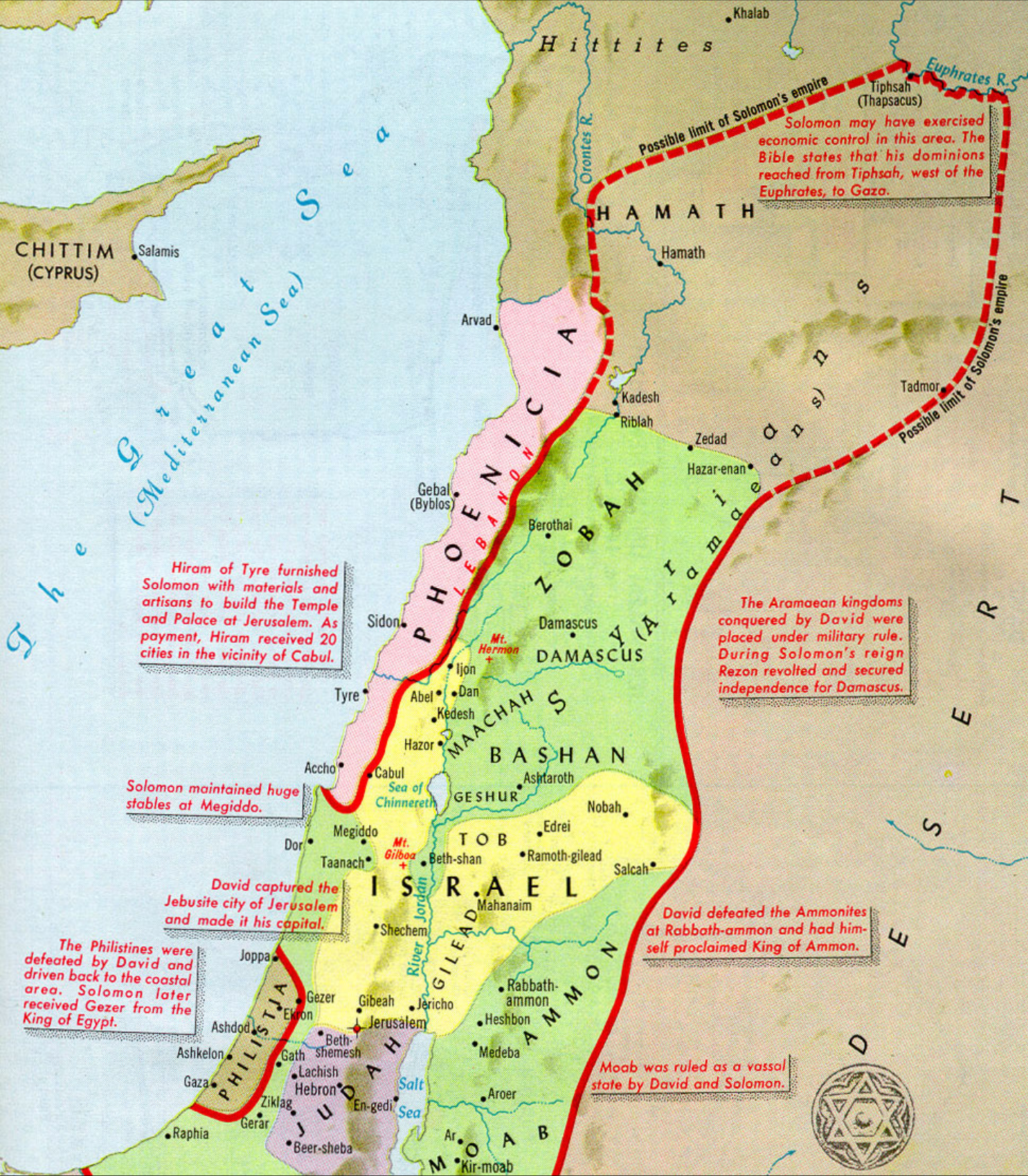




Pathrusim dwelt in Pathros, or upper Egypt, Caluhim in Philistia, and the Caphtorim in Crete, and then later moved on to Philistia.







After whom  
was the  
principle  
city of the  
Phoenicians  
named?



Genesis 10:15 Canaan  
begot Sidon his firstborn, ...  
The city of Sidon still exists today.





# Who gave rise to the Hittites?



Genesis 10:15 Canaan begot ... Heth.

The Hittite empire lasted over 800 years, and then many of its people migrated eastward. The Hittites are identified in Egyptian inscriptions as the “Kheta”, and in cuneiform inscriptions from Babylonian as “Khittae”, which may be “Cathay”, an older English word for China.



“Kitai” in  
modern  
Russian  
means  
China.





# Credits

- # 2 <http://www.hebrewisraelites.org/physicalapp.htm>
- # 3 <http://www.sacred-destinations.com/ethiopia/map.htm>
- # 4 [http://www.sas.upenn.edu/African\\_Studies/CIA\\_Maps/Egypt\\_19870.gif](http://www.sas.upenn.edu/African_Studies/CIA_Maps/Egypt_19870.gif)
- # 5 [http://www.lib.utexas.edu/maps/africa/libya\\_pol93.jpg](http://www.lib.utexas.edu/maps/africa/libya_pol93.jpg)
- # 6 <http://www.archives.govt.nz/exhibitions/currentexhibitions/chch/images/pc-education-map.jpg>
- # 7 [http://www.lib.utexas.edu/maps/middle\\_east\\_and\\_asia/saudi\\_arabia\\_rel\\_2003.jpg](http://www.lib.utexas.edu/maps/middle_east_and_asia/saudi_arabia_rel_2003.jpg)
- # 8 <http://www.mostmerciful.com/map4.jpg>
- # 9 [http://eaansa.org/images/map\\_sudan.jpg](http://eaansa.org/images/map_sudan.jpg)
- # 10 <http://www.geocities.com/mandaeans/s2.jpg>
- # 11 <http://www.keyway.ca/gif/mideast.gif>

# Credits

- # 12 [http://www.biblepicturegallery.com/Samples/ca/teaching/b\\_study/ot\\_backg/The%20god%20Nimrod%20which%20may%20be%20related%20to%20the%20hero%20N.gif](http://www.biblepicturegallery.com/Samples/ca/teaching/b_study/ot_backg/The%20god%20Nimrod%20which%20may%20be%20related%20to%20the%20hero%20N.gif)
- # 13 [http://youngavraham.files.wordpress.com/2007/05/cd\\_nimrod.jpg](http://youngavraham.files.wordpress.com/2007/05/cd_nimrod.jpg)
- # 14 <http://www.americanpresbyterianchurch.org/Bull-Nimrod.gif>
- # 15 [http://www.nimrodleague.org/images/nimrod\\_copper.jpg](http://www.nimrodleague.org/images/nimrod_copper.jpg)
- # 16 <http://www.solarsabbath.org/nimrod%20scan.jpg>
- # 17 <http://www.truthnet.org/biblicalarcheology/2/Mesopotamiamap.jpg>
- # 18 <http://www.biblepicturegallery.com/free/Pics/Asshur.gif>
- # 19 <http://anomalyhunters.com/cradle/Neb%20Map.jpg>
- # 20 <http://www.denemoore.com/images/AssyriaMap%5B1%5D.gif>

# Credits

- # 21 <http://www.aina.org/aol/nimrud/ariel1.jpg>
- # 22 <http://www.crystalinks.com/canaanites.jpg>
- # 23 [http://www.netzarim.co.il/Shared/Temunot/Map%20Israel%201000%20BCE%20\(Hammond\)%20980x1427.jpg](http://www.netzarim.co.il/Shared/Temunot/Map%20Israel%201000%20BCE%20(Hammond)%20980x1427.jpg)  
<http://z.about.com/d/atheism/1/0/J/T/MinoanMedMap3000-l.jpg>
- # 24 [http://www.netzarim.co.il/Shared/Temunot/Map%20Israel%201000%20BCE%20\(Hammond\)%20980x1427.jpg](http://www.netzarim.co.il/Shared/Temunot/Map%20Israel%201000%20BCE%20(Hammond)%20980x1427.jpg)
- # 25 <http://www.keyway.ca/gif/sidon.gif>
- # 26 <http://www.dkimages.com/discover/previews/902/804189.JPG>
- # 27 <http://www.thelatinlibrary.com/imperialism/maps/hittites.gif>